

Italy*

September 2024

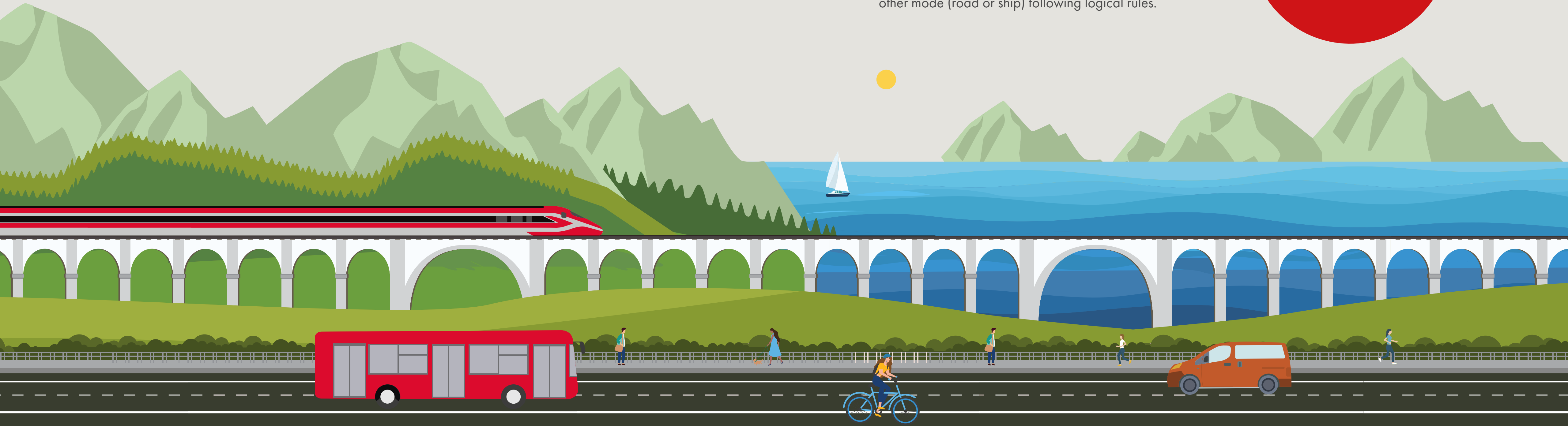
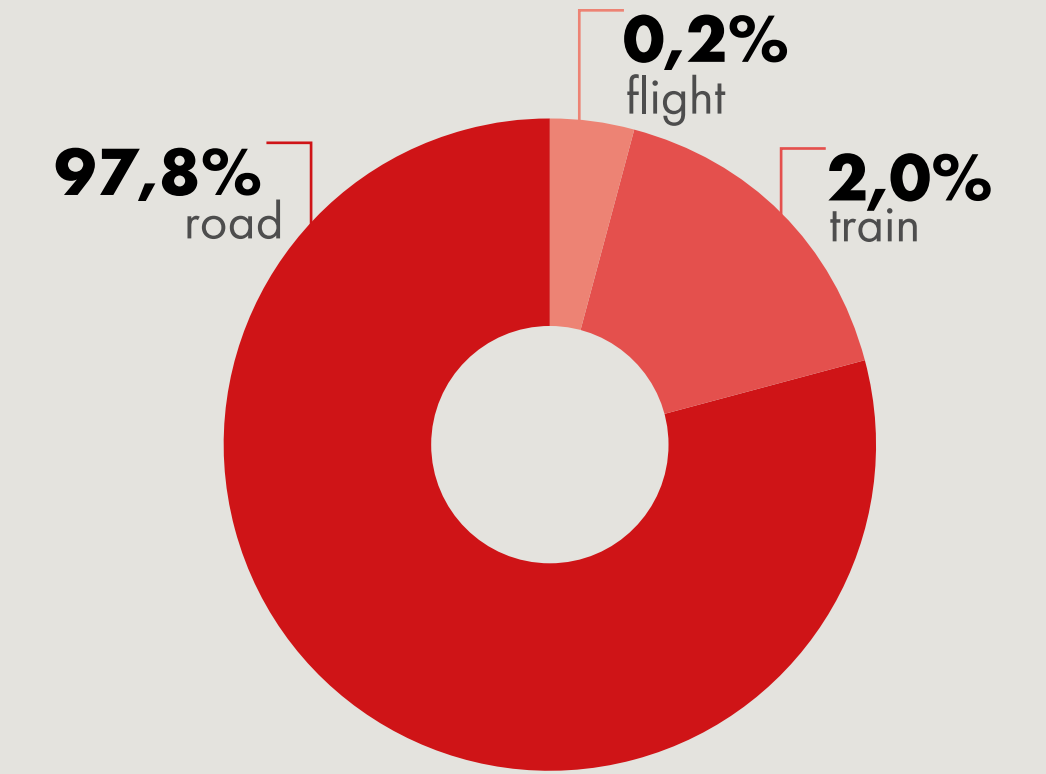
Travellers's daily average (month)

Working day
37,5 millions
75% of the total

Non-Working day
36,6 millions
73% of the total

Extra-urban travellers's modal split

The selection of a specific mode of transport was made by analyzing the type of cell crossed by each traveller. Cells's positions corresponding to railway stations and airports are known and the mode attribution is made by an algorithm that analyzes the sequence of the types of cells crossed and associates each movement with the train, plane or other mode (road or ship) following logical rules.



Mobility rate by day of the week

monday	tuesday	wednesday	thursday	friday	saturday	sunday
74,8%	75,1%	75,1%	75,0%	76,3%	75,3%	71,7%

Daily average travelled distance

Working day **68,1 km** Non-Working day **61,0 km**

Since January 2024, a new, more effective and efficient algorithm has been adopted to calculate the various indicators in the bulletins. The numbers reported are therefore no longer comparable with those from previous years.

Processing of Vodafone Analytics (non-personal telephone Big Data, anonymized and aggregated in absolute compliance with the privacy requirements of the GDPR).

* The analysis considers only Italian SIM cards
 Source: Vodafone for FS Research



FS Research Centre
 Il Centro Studi di Ferrovie dello Stato Italiane