

# Station attendance

## Roma Termini

Analysis of the presences in the station through the processing of Vodafone Analytics (non-personal telephone Big Data, anonymized and aggregated in absolute compliance with the privacy requirements of the GDPR).

**Total**  
**9,9 millions**

**76,7%** Italians  
**23,3%** Foreigners

**3,3 millions**  
Number of visitors\*

**6,6 millions**  
Passengers

## Types of travelers

**39%** commuters **61%** occasional

	Commuters	Occasional
monday	45%	55%
tuesday	48%	52%
wednesday	46%	54%
thursday	43%	57%
friday	39%	61%
saturday	21%	79%
sunday	17%	83%

\*Travelers present at the station who do not use train services.

\*\*Arrival or departure from the station by private transportation, public services (except train) or on foot.

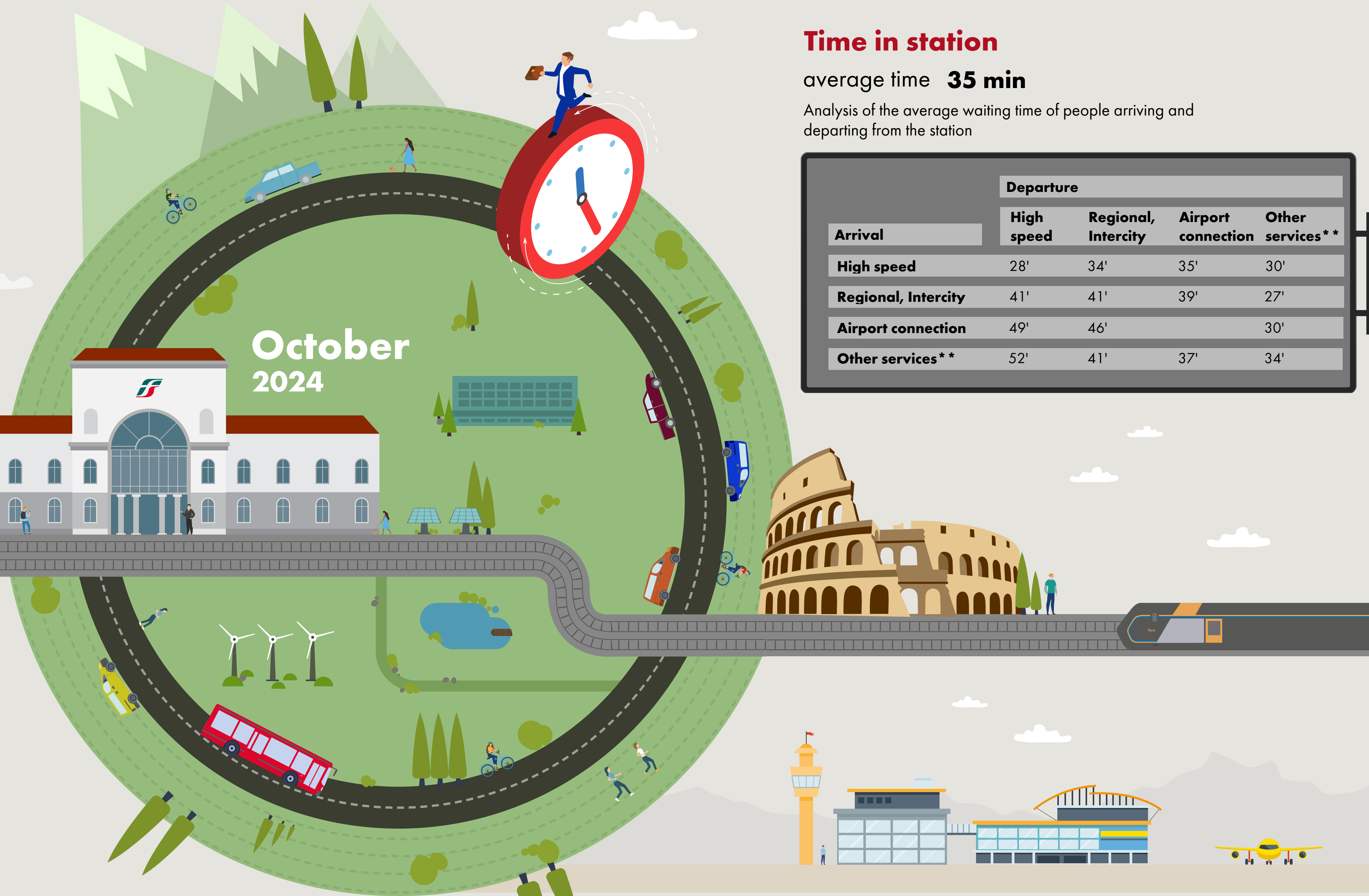
Source: Vodafone for FS Research

# Time in station

average time **35 min**

Analysis of the average waiting time of people arriving and departing from the station

Arrival	Departure			
	High speed	Regional, Intercity	Airport connection	Other services**
High speed	28'	34'	35'	30'
Regional, Intercity	41'	41'	39'	27'
Airport connection	49'	46'		30'
Other services**	52'	41'	37'	34'



Since January 2024, a new, more effective and efficient algorithm has been adopted to calculate the various indicators in the bulletins. The numbers reported are therefore no longer comparable with those from previous years.