

Station attendance

Milano Centrale

Analysis of the presence of people in the station through the processing of Vodafone Analytics (non-personal telephone Big Data, anonymized and aggregated in absolute compliance with the privacy requirements of the GDPR).

Totale
7,2 millions

75,3% Italians
24,7% Foreigners

1,0 millions
Number of visitors*
6,2 millions
Passengers

Types of travelers

27% commuters **73%** occasional

	Commuters	Occasional
monday	31%	69%
tuesday	33%	67%
wednesday	32%	68%
thursday	30%	70%
friday	26%	74%
saturday	16%	84%
sunday	16%	84%

*Travelers present at the station who do not use train services.

**Arrival or departure from the station by private transportation, public services (except train) or on foot.

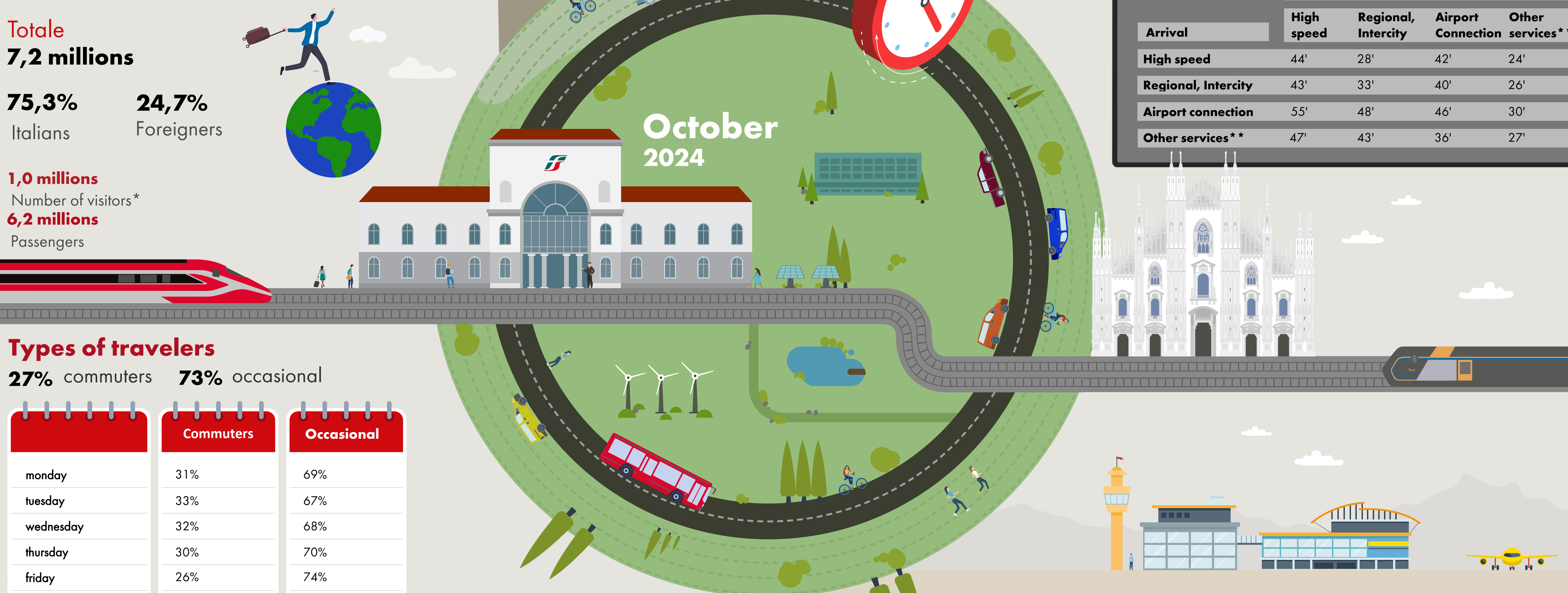
Source: Vodafone for FS Research

Time in station

average time **35 min**

Analysis of the average waiting time of people arriving and departing from the station

Arrival	Departure			
	High speed	Regional, Intercity	Airport Connection	Other services**
High speed	44'	28'	42'	24'
Regional, Intercity	43'	33'	40'	26'
Airport connection	55'	48'	46'	30'
Other services**	47'	43'	36'	27'



Since January 2024, a new, more effective and efficient algorithm has been adopted to calculate the various indicators in the bulletins. The numbers reported are therefore no longer comparable with those from previous years.