

Station attendance

Roma Termini

Analysis of the presences in the station through the processing of Vodafone Analytics (non-personal telephone Big Data, anonymized and aggregated in absolute compliance with the privacy requirements of the GDPR).

Total
8,9 millions

84,7% Italians
15,3% Foreigners

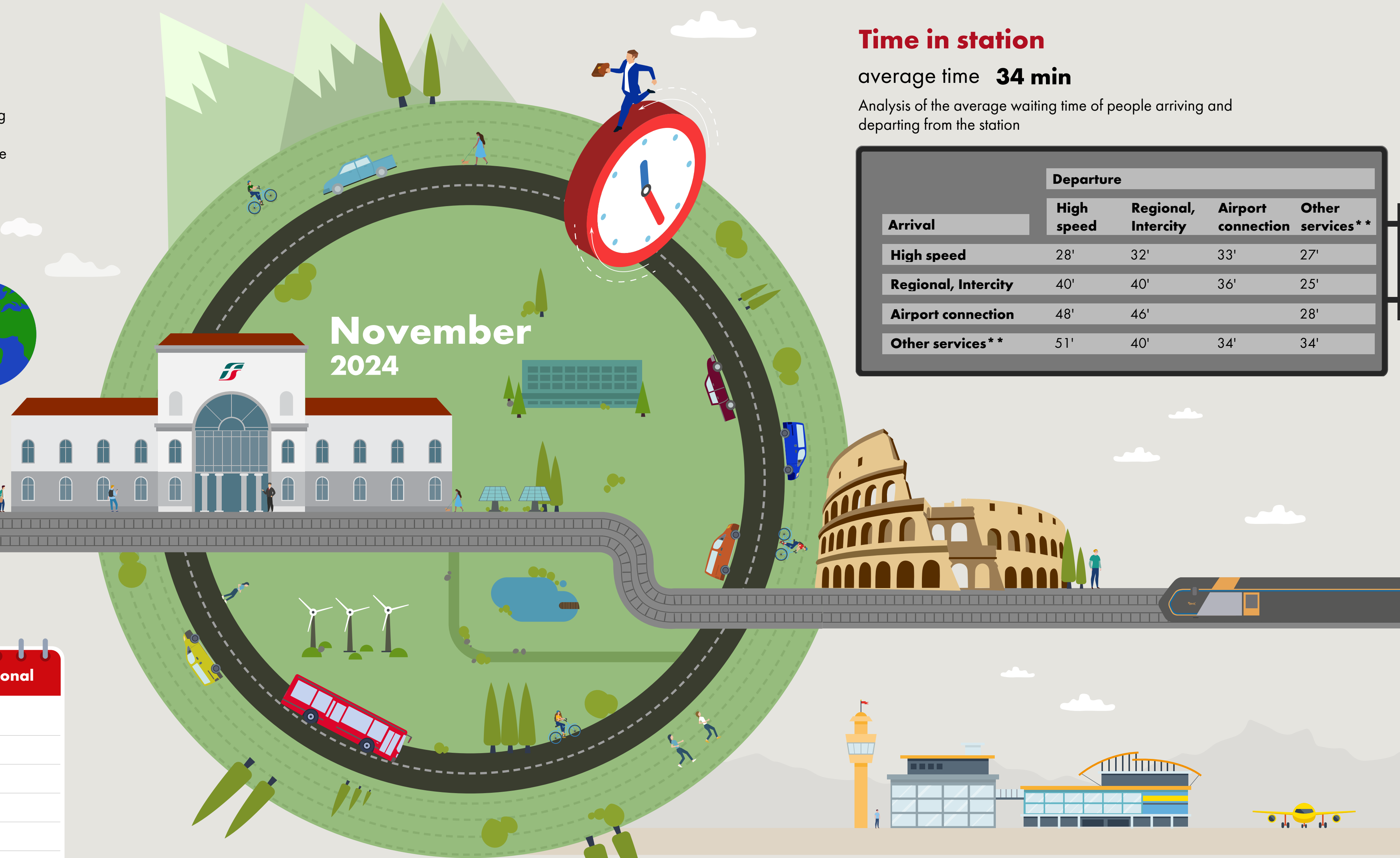
2,7 millions
Number of visitors*
6,2 millions
Passengers

Types of travelers

41% commuters **59%** occasional

| | Commuters | Occasional |
|-----------|-----------|------------|
| monday | 47% | 53% |
| tuesday | 51% | 49% |
| wednesday | 50% | 50% |
| thursday | 48% | 52% |
| friday | 37% | 63% |
| saturday | 24% | 76% |
| sunday | 17% | 83% |

*Travelers present at the station who do not use train services.
**Arrival or departure from the station by private transportation, public services (except train) or on foot.
Source: Vodafone for FS Research



Time in station

average time **34 min**

Analysis of the average waiting time of people arriving and departing from the station

| Arrival | Departure | | | |
|---------------------|------------|---------------------|--------------------|------------------|
| | High speed | Regional, Intercity | Airport connection | Other services** |
| High speed | 28' | 32' | 33' | 27' |
| Regional, Intercity | 40' | 40' | 36' | 25' |
| Airport connection | 48' | 46' | | 28' |
| Other services** | 51' | 40' | 34' | 34' |

Since January 2024, a new, more effective and efficient algorithm has been adopted to calculate the various indicators in the bulletins. The numbers reported are therefore no longer comparable with those from previous years.



FS Research Centre
Il Centro Studi di Ferrovie dello Stato Italiane