

Station attendance

Napoli Centrale

Analysis of the presence of people in the station through the processing of Vodafone Analytics (non-personal telephone Big Data, anonymized and aggregated in absolute compliance with the privacy requirements of the GDPR).

Total
3,8 millions

90,5% Italians
9,5% Foreigners

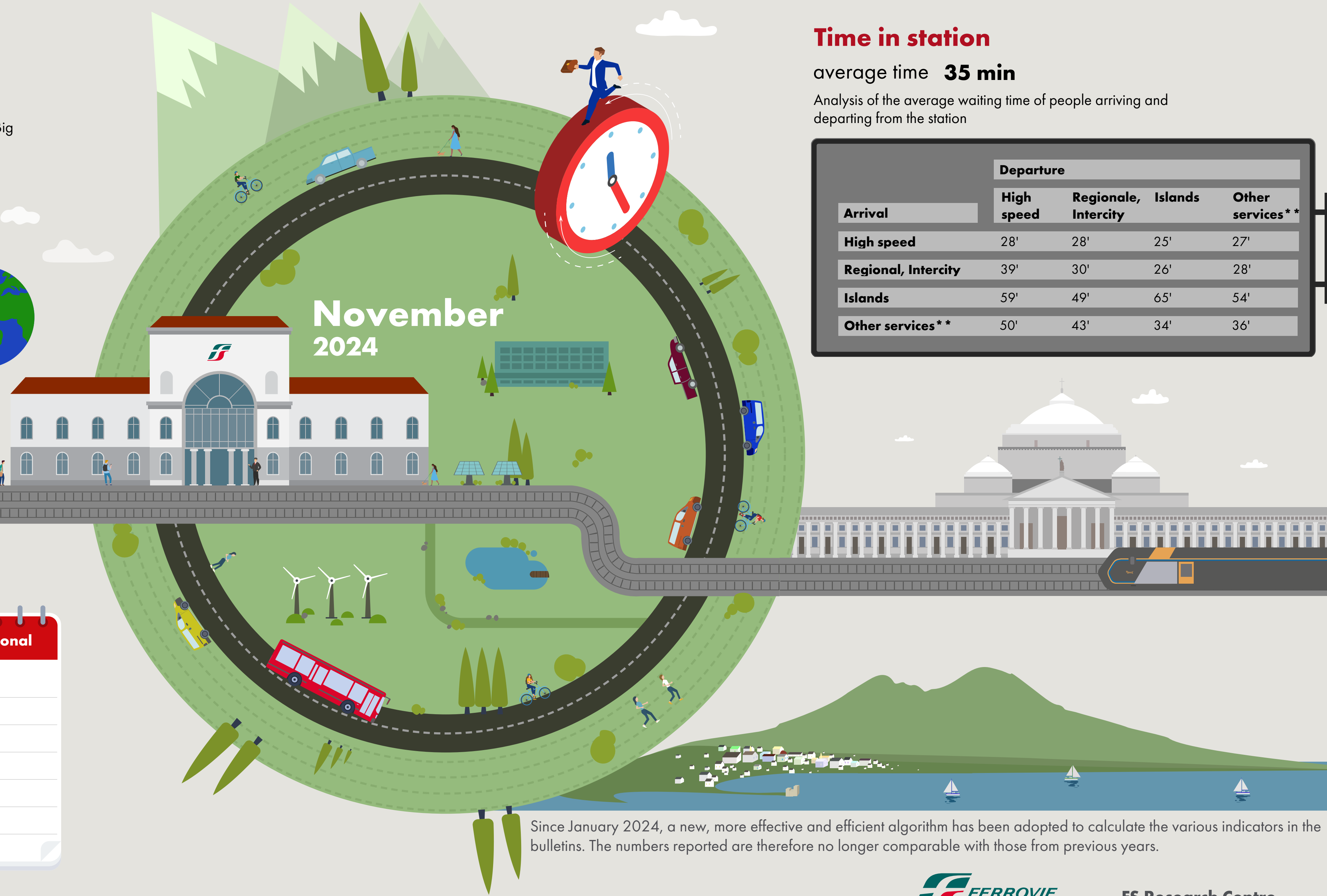
1,0 millions
Number of visitors*
2,8 millions
Passengers

Types of travelers

29% commuters **71%** occasional

	Commuters	Occasional
monday	35%	65%
tuesday	38%	62%
wednesday	38%	62%
thursday	37%	63%
friday	27%	73%
saturday	18%	82%
sunday	14%	86%

*Travelers present at the station who do not use train services.
**Arrival or departure from the station by private transportation, public services (except train) or on foot.
Source: Vodafone for FS Research



Time in station

average time **35 min**

Analysis of the average waiting time of people arriving and departing from the station

Arrival	Departure			
	High speed	Regionale, Intercity	Islands	Other services**
High speed	28'	28'	25'	27'
Regional, Intercity	39'	30'	26'	28'
Islands	59'	49'	65'	54'
Other services**	50'	43'	34'	36'

Since January 2024, a new, more effective and efficient algorithm has been adopted to calculate the various indicators in the bulletins. The numbers reported are therefore no longer comparable with those from previous years.