

# Station attendance

## Milano Centrale

Analysis of the presence of people in the station through the processing of Vodafone Analytics (non-personal telephone Big Data, anonymized and aggregated in absolute compliance with the privacy requirements of the GDPR).

**Totale**  
**5,2 millions**

**66,3%** Italians  
**33,7%** Foreigners

**0,3 millions**  
Number of visitors\*  
**4,9 millions**  
Passengers

## Types of travelers

**14%** commuters **86%** occasional

	Commuters	Occasional
monday	15%	85%
tuesday	17%	83%
wednesday	16%	84%
thursday	16%	84%
friday	14%	86%
saturday	12%	88%
sunday	12%	88%

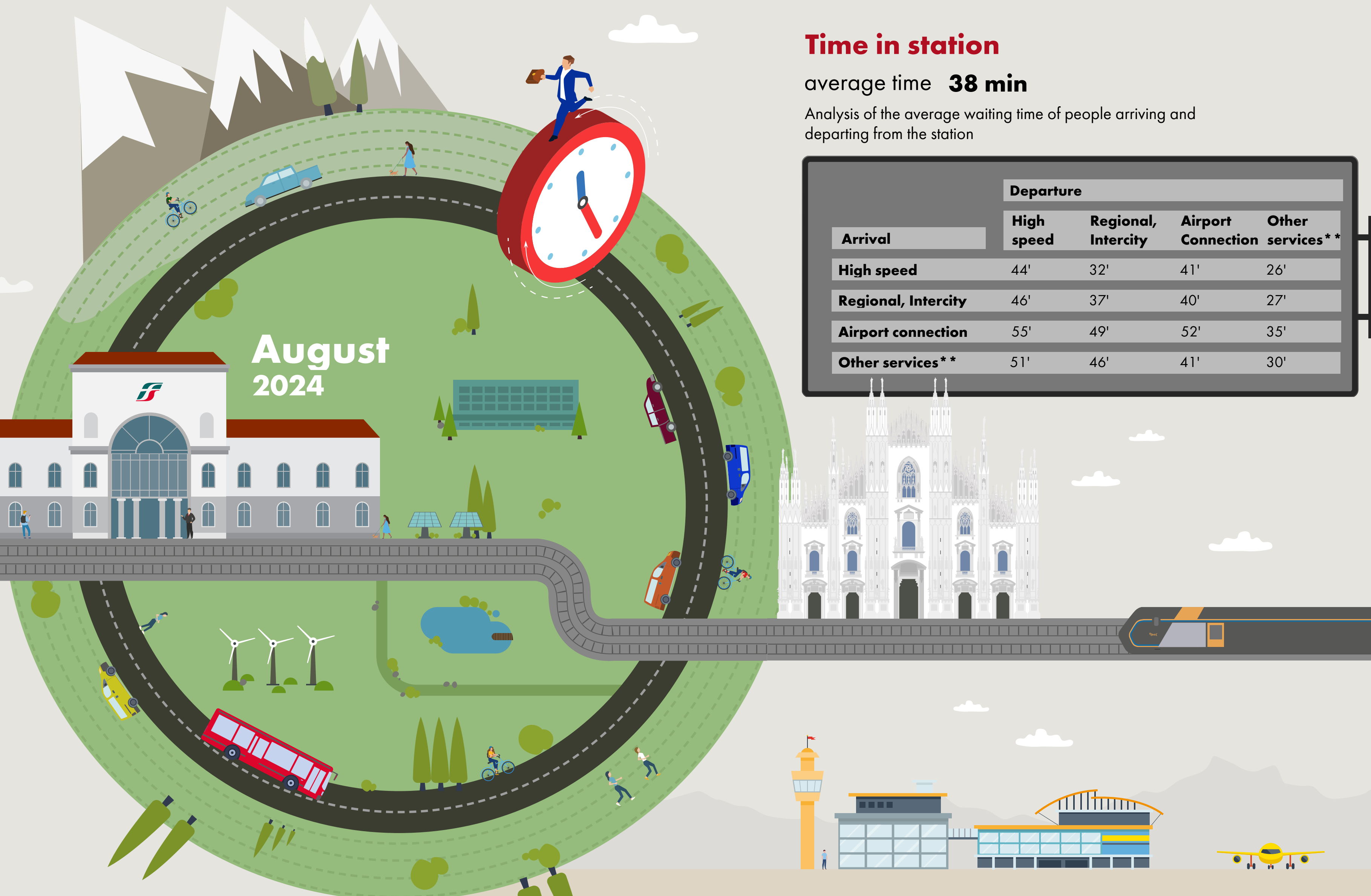
\*Travelers present at the station who do not use train services.  
\*\*Arrival or departure from the station by private transportation, public services (except train) or on foot.  
Source: Vodafone for FS Research

# Time in station

average time **38 min**

Analysis of the average waiting time of people arriving and departing from the station

Arrival	Departure			
	High speed	Regional, Intercity	Airport Connection	Other services**
High speed	44'	32'	41'	26'
Regional, Intercity	46'	37'	40'	27'
Airport connection	55'	49'	52'	35'
Other services**	51'	46'	41'	30'



Since January 2024, a new, more effective and efficient algorithm has been adopted to calculate the various indicators in the bulletins. The numbers reported are therefore no longer comparable with those from previous years.