

Station attendance

Roma Termini

Analysis of the presences in the station through the processing of Vodafone Analytics (non-personal telephone Big Data, anonymized and aggregated in absolute compliance with the privacy requirements of the GDPR).

Total
9,8 millions

79% Italians
21% Foreigners

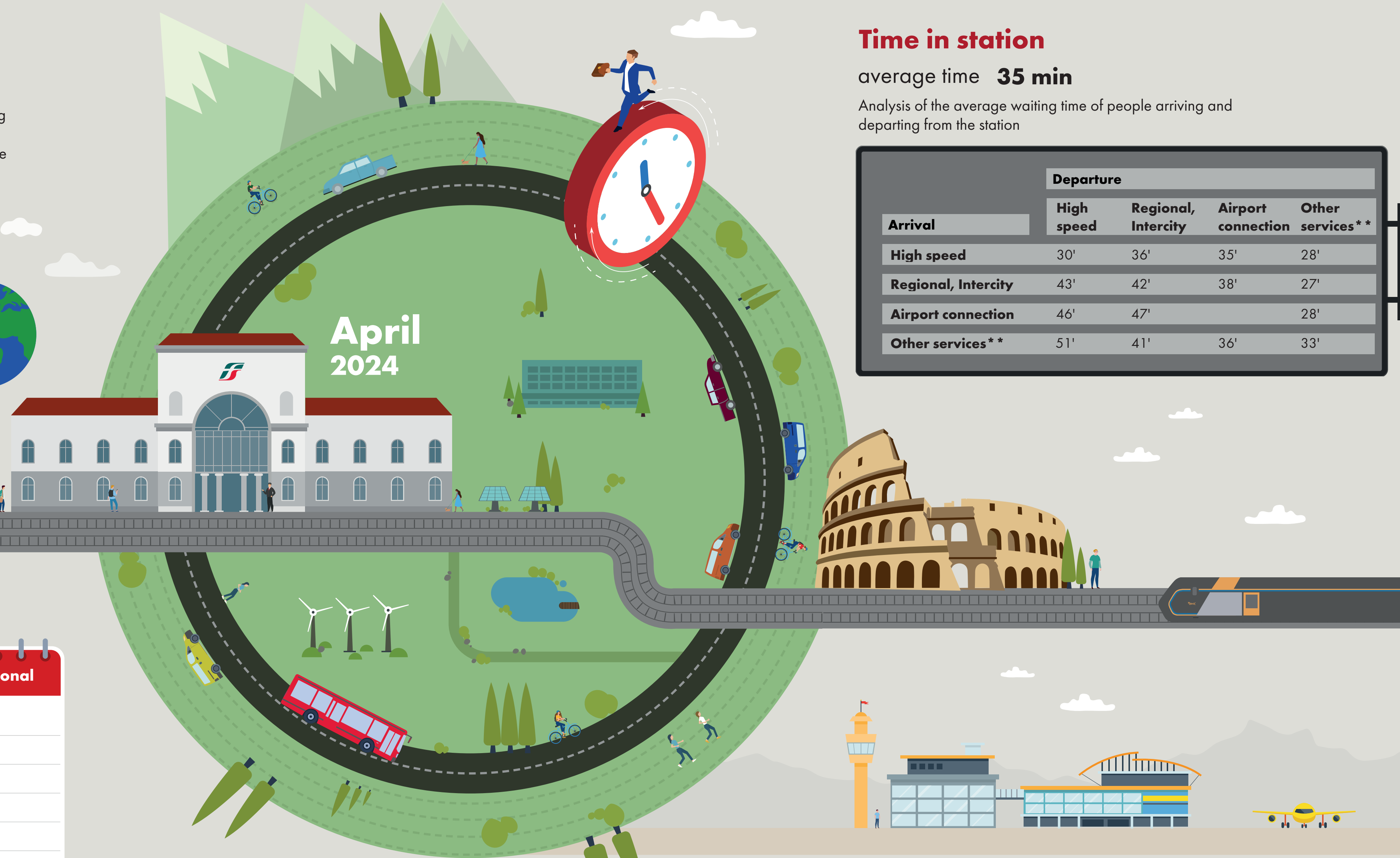
3,1 millions
Number of visitors*
6,7 millions
Passengers

Types of travelers

38% commuters **62%** occasional

	Commuters	Occasional
monday	41%	59%
tuesday	44%	56%
wednesday	46%	54%
thursday	40%	60%
friday	41%	59%
saturday	24%	76%
sunday	19%	81%

*Travelers present at the station who do not use train services.
**Arrival or departure from the station by private transportation, public services (except train) or on foot.
Source: Vodafone for FS Research



Time in station

average time **35 min**

Analysis of the average waiting time of people arriving and departing from the station

Arrival	Departure			
	High speed	Regional, Intercity	Airport connection	Other services**
High speed	30'	36'	35'	28'
Regional, Intercity	43'	42'	38'	27'
Airport connection	46'	47'		28'
Other services**	51'	41'	36'	33'

Since January 2024, a new, more effective and efficient algorithm has been adopted to calculate the various indicators in the bulletins. The numbers reported are therefore no longer comparable with those from previous years.



FS Research Centre
Il Centro Studi di Ferrovie dello Stato Italiane