

# Station attendance

## Roma Termini

Analysis of the presences in the station through the processing of Vodafone Analytics (non-personal telephone Big Data, anonymized and aggregated in absolute compliance with the privacy requirements of the GDPR).

**Total**  
**9,8 millions**

**77,7%** Italians  
**22,3%** Foreigners

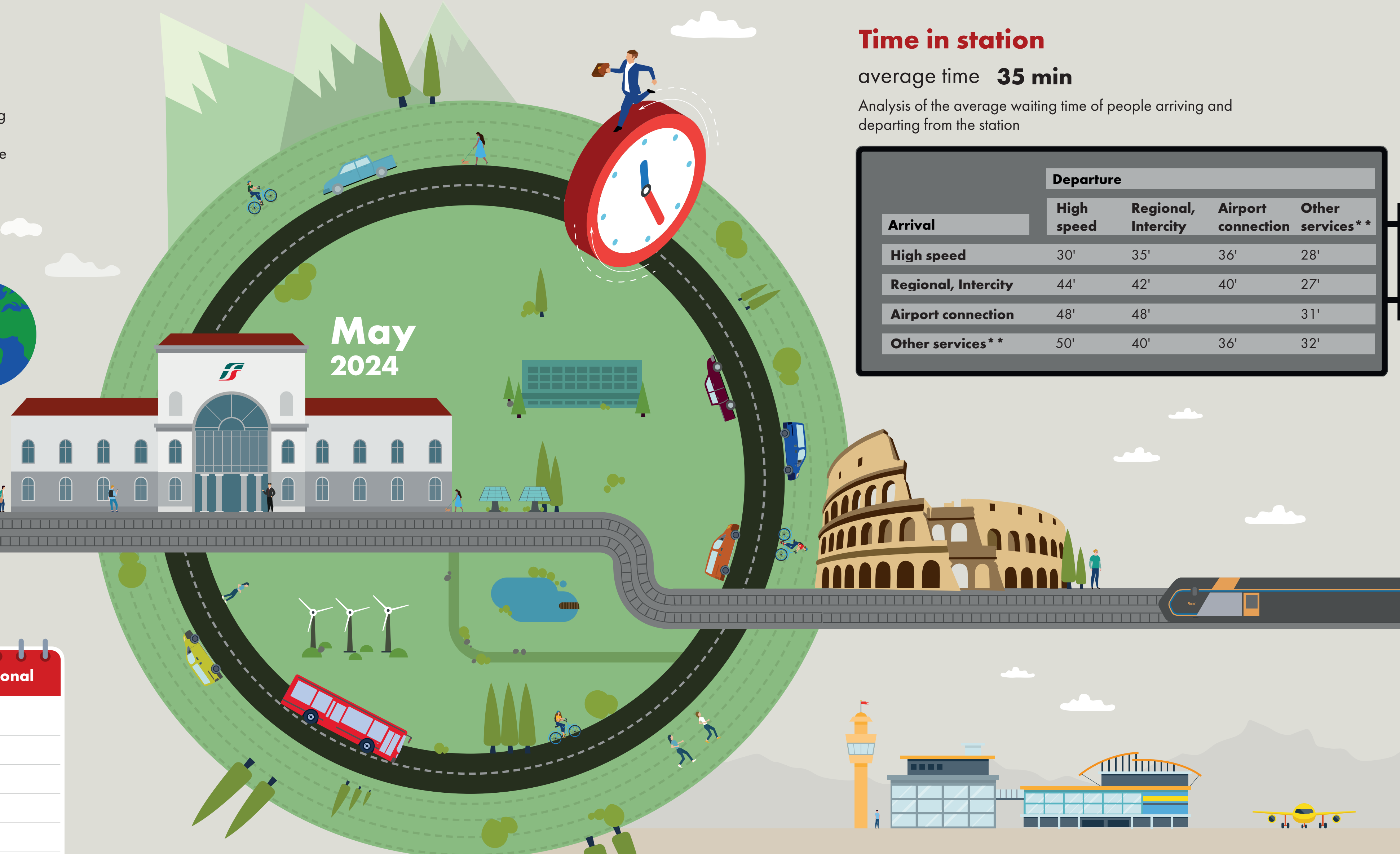
**3,1 millions**  
Number of visitors\*  
**6,7 millions**  
Passengers

## Types of travelers

**37%** commuters **63%** occasional

	Commuters	Occasional
monday	48%	58%
tuesday	46%	54%
wednesday	41%	59%
thursday	43%	57%
friday	40%	60%
saturday	23%	77%
sunday	18%	82%

\*Travelers present at the station who do not use train services.  
\*\*Arrival or departure from the station by private transportation, public services (except train) or on foot.  
Source: Vodafone for FS Research



# Time in station

average time **35 min**

Analysis of the average waiting time of people arriving and departing from the station

Arrival	Departure			
	High speed	Regional, Intercity	Airport connection	Other services**
High speed	30'	35'	36'	28'
Regional, Intercity	44'	42'	40'	27'
Airport connection	48'	48'		31'
Other services**	50'	40'	36'	32'

Since January 2024, a new, more effective and efficient algorithm has been adopted to calculate the various indicators in the bulletins. The numbers reported are therefore no longer comparable with those from previous years.



**FS Research Centre**  
Il Centro Studi di Ferrovie dello Stato Italiane