

Station attendance

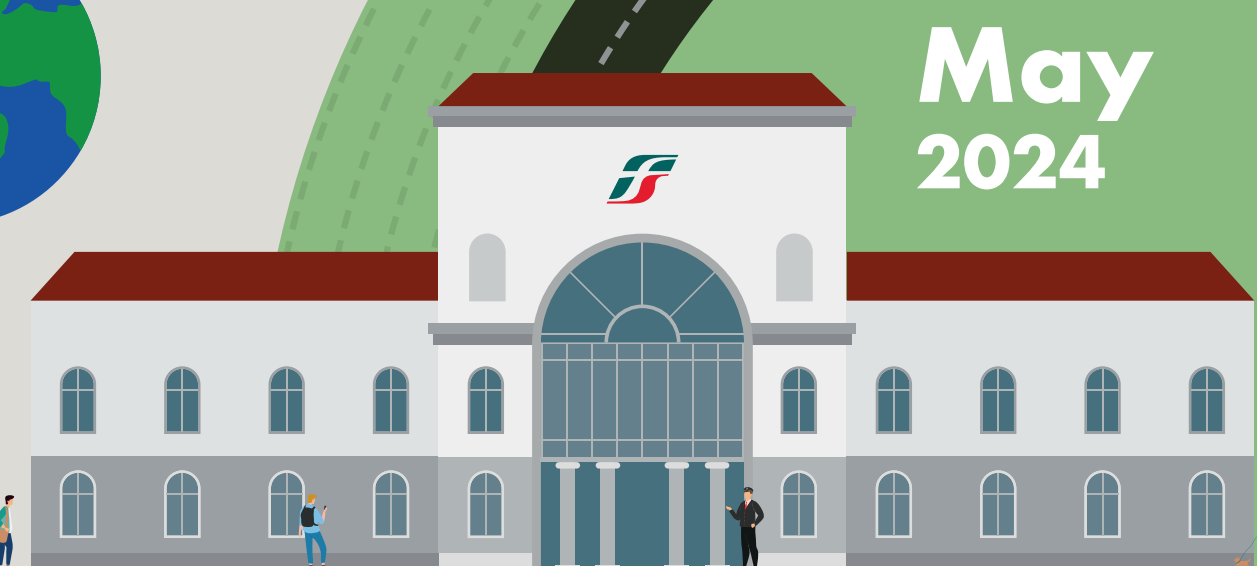
Napoli Centrale

Analysis of the presence of people in the station through the processing of Vodafone Analytics (non-personal telephone Big Data, anonymized and aggregated in absolute compliance with the privacy requirements of the GDPR).

Total
4,2 millions

76,7% Italians
23,3% Foreigners

1,0 millions
Number of visitors*
3,2 millions
Passengers



Types of travelers

26% commuters **74%** occasional

	Commuters	Occasional
monday	31%	69%
tuesday	31%	69%
wednesday	27%	73%
thursday	30%	70%
friday	27%	73%
saturday	15%	85%
sunday	13%	87%

*Travelers present at the station who do not use train services.
**Arrival or departure from the station by private transportation, public services (except train) or on foot.
Source: Vodafone for FS Research

Time in station

average time **36 min**

Analysis of the average waiting time of people arriving and departing from the station

Arrival	Departure			
	High speed	Regionale, Intercity	Islands	Other services**
High speed	34'	34'	26'	29'
Regional, Intercity	44'	34'	28'	28'
Islands	58'	54'	63'	48'
Other services**	50'	41'	30'	32'

Since January 2024, a new, more effective and efficient algorithm has been adopted to calculate the various indicators in the bulletins. The numbers reported are therefore no longer comparable with those from previous years.