

Station attendance

Napoli Centrale

Analysis of the presence of people in the station through the processing of Vodafone Analytics (non-personal telephone Big Data, anonymized and aggregated in absolute compliance with the privacy requirements of the GDPR).

Total
4,1 millions

76,3% Italians
23,7% Foreigners

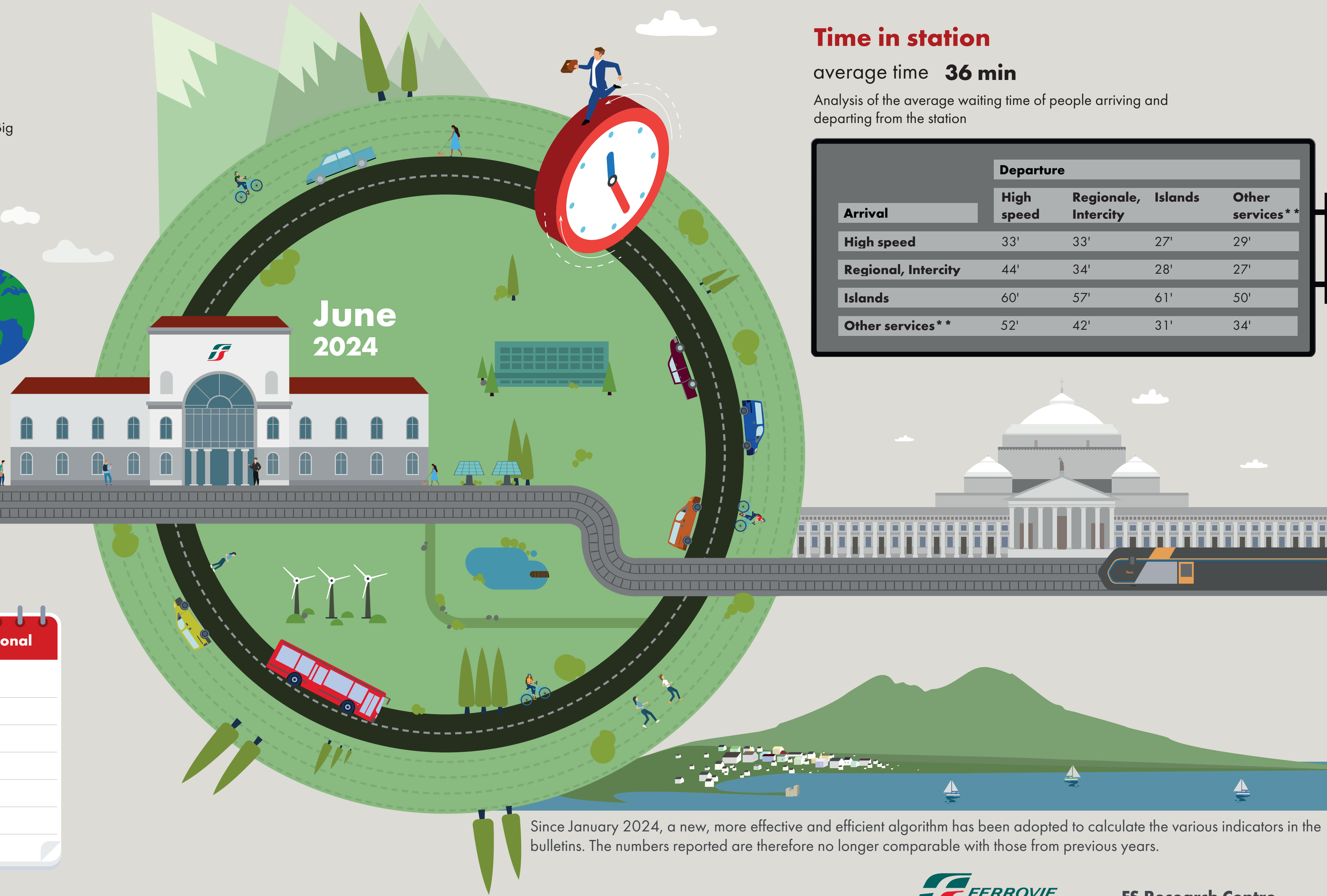
0,9 millions
Number of visitors*
3,2 millions
Passengers

Types of travelers

23% commuters **77%** occasional

	Commuters	Occasional
monday	27%	73%
tuesday	29%	71%
wednesday	29%	71%
thursday	27%	73%
friday	25%	75%
saturday	15%	85%
sunday	13%	87%

*Travelers present at the station who do not use train services.
**Arrival or departure from the station by private transportation, public services (except train) or on foot.
Source: Vodafone for FS Research



Time in station

average time **36 min**

Analysis of the average waiting time of people arriving and departing from the station

Arrival	Departure			
	High speed	Regionale, Intercity	Islands	Other services**
High speed	33'	33'	27'	29'
Regional, Intercity	44'	34'	28'	27'
Islands	60'	57'	61'	50'
Other services**	52'	42'	31'	34'

Since January 2024, a new, more effective and efficient algorithm has been adopted to calculate the various indicators in the bulletins. The numbers reported are therefore no longer comparable with those from previous years.