

Station attendance

Napoli Centrale

Analysis of the presence of people in the station through the processing of Vodafone Analytics (non-personal telephone Big Data, anonymized and aggregated in absolute compliance with the privacy requirements of the GDPR).

Total
4,1 millions

88,4% Italians
11,6% Foreigners

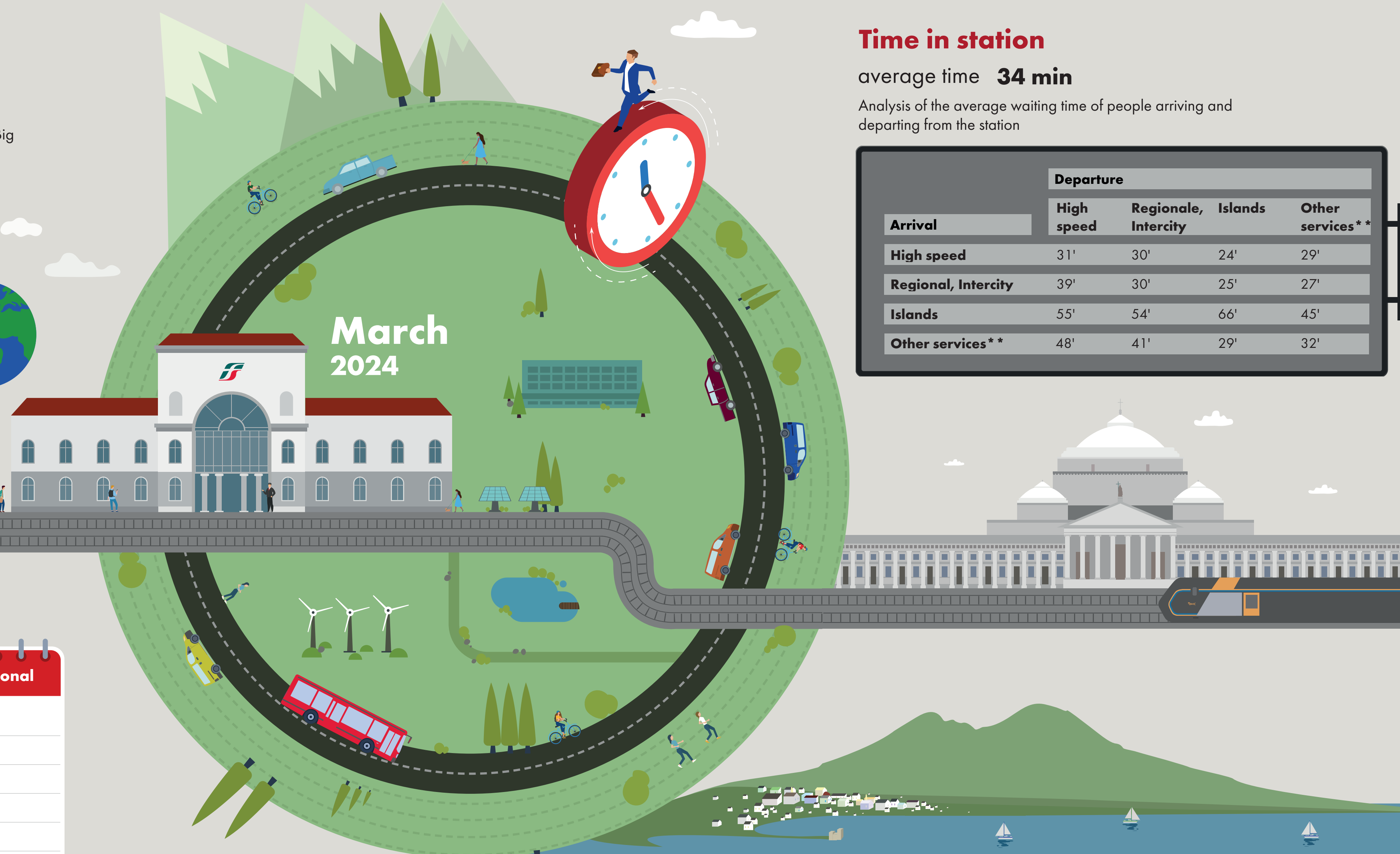
1,0 millions
Number of visitors*
3,1 millions
Passengers

Types of travelers

31% commuters **69%** occasional

	Commuters	Occasional
monday	40%	60%
tuesday	41%	59%
wednesday	38%	62%
thursday	35%	65%
friday	31%	69%
saturday	18%	82%
sunday	16%	84%

*Travelers present at the station who do not use train services.
**Arrival or departure from the station by private transportation, public services (except train) or on foot.
Source: Vodafone for FS Research



Time in station

average time **34 min**

Analysis of the average waiting time of people arriving and departing from the station

Arrival	Departure			
	High speed	Regionale, Intercity	Islands	Other services**
High speed	31'	30'	24'	29'
Regional, Intercity	39'	30'	25'	27'
Islands	55'	54'	66'	45'
Other services**	48'	41'	29'	32'

Since January 2024, a new, more effective and efficient algorithm has been adopted to calculate the various indicators in the bulletins. The numbers reported are therefore no longer comparable with those from previous years.